

Wireless LAN Adapter Series

11n EW-7708Pn / EW-7718Un / EW-7728In
EW-7717Un / EW-7727In

11g EW-7128g / EW-7318USg / EW-7318Ug / EW-7108PCg

Quick Installation Guide

Version 1.1 / November, 2008

Multi-Language QIG in Driver CD

=====

Český: Českého průvodce rychlou instalací naleznete na přiloženém CD s ovladači

Deutsch: Auf der beiliegend Treiber CD finden Sie deutsche Anleitung zur Schnellinstallation.

Español: Incluido en el CD el QIG en Español

Français: Veuillez trouver l'français QIG ci-joint dans le CD

Italiano: Incluso nel CD il QIG in Italiano

Magyar: A magyar telepítési útmutató megtalálható a mellékelt CD-n

Nederlands: De nederlandse QIG treft u aan op de bijgesloten CD

Polski: Skrócona instrukcja instalacji w języku polskim znajduje się na załączonej płycie CD

Português: Incluído no CD o QIG em Portugues

Русский: Найдите QIG на русском языке на приложенном CD

Romana: Cd-ul cuprinde Ghid de instalare rapida in limba romana

Slovensky: Anglického sprievodcu rýchlou inštaláciou nájdete na priloženom CD s ovládačmi.

Türkçe: Ürün ile beraber gelen CD içinde Türkçe Hızlı Kurulum Kılavuzu'nu bulabilirsiniz

简体中文: 产品包装 CD 光盘中含有简体中文版快速安装手册

繁體中文: 產品包裝隨附 CD 中含有繁體中文版之快速安裝指南



Copyright© by Edimax Technology Co, LTD. all rights reserved. No part of this publication may be reproduced, transmitted, transcribed, stored in a retrieval system, or translated into any language or computer language, in any form or by any means, electronic, mechanical, magnetic, optical, chemical, manual or otherwise, without the prior written permission of this company.

This company makes no representations or warranties, either expressed or implied, with respect to the contents hereof and specifically disclaims any warranties, merchantability or fitness for any particular purpose. Any software described in this manual is sold or licensed "as is". Should the programs prove defective following their purchase, the buyer (and not this company, its distributor, or its dealer) assumes the entire cost of all necessary servicing, repair, and any incidental or consequential damages resulting from any defect in the software. Further, this company reserves the right to revise this publication and to make changes from time to time in the contents hereof without obligation to notify any person of such revision or changes.

The product you have purchased and the setup screen may appear slightly different from those shown in this QIG. For more detailed information about this product, please refer to the User's Manual on the CD-ROM. The software and specifications are subject to change without notice. Please visit our web site www.edimax.com for the update. All right reserved including all brand and product names mentioned in this manual are trademarks and/or registered trademarks of their respective holders.

Contents

1. Product Information.....	5
2. Package Contents	6
3. Network Card Installation.....	8
3.1 Hardware Installation.....	8
3.2 Software Installation	11
4. Connect to Wireless Access Point	14



Copyright© by Edimax Technology Co, LTD. all rights reserved. No part of this publication may be reproduced, transmitted, transcribed, stored in a retrieval system, or translated into any language or computer language, in any form or by any means, electronic, mechanical, magnetic,optical, chemical, manual or otherwise, without the prior written permission of this company.

This company makes no representations or warranties, either expressed or implied, with respect to the contents hereof and specifically disclaims any warranties, merchantability or fitness for any particular purpose. Any software described in this manual is sold or licensed "as is". Should the programs prove defective following their purchase, the buyer (and not this company, its distributor, or its dealer) assumes the entire cost of all necessary servicing, repair, and any incidental or consequential damages resulting from any defect in the software. Further, this company reserves the right to revise this publication and to make changes from time to time in the contents hereof without obligation to notify any person of such revision or changes.

The product you have purchased and the setup screen may appear slightly different from those shown in this QIG. For more detailed information about this product, please refer to the User's Manual on the CD-ROM. The software and specifications are subject to change without notice. Please visit our web site www.edimax.com for the update. All right reserved including all brand and product names mentioned in this manual are trademarks and/or registered trademarks of their respective holders.

1. Product Information

Main Features

- Complies with 802.11n, 802.11g and 802.11b standards.
- Provides further coverage, less dead spot and high throughput (11n Adapter Up to 300Mbps with MIMO technology).
- Supports WMM, WMM-PS (IEEE 802.11e QoS standard).
- Supports 64/128-bit WEP, WPA (TKIP with IEEE 802.1x), WPA2 (AES with IEEE 802.1x) for high security level.
- Supports operating system: Windows OS 2000/XP/Vista, MAC OS 10.4.x /10.5.x and Linux
- Supports WPS configuration button. (EW-7717Un, EW-7727In only)
- Supports USB 2.0/1.1 interface. (EW-7717Un, EW-7718Un, EW-7318Ug, EW-7318USg, only)

2. Package Contents

Before you starting to use this wireless network card, please check if there's anything missing in the package, and contact your dealer of purchase to claim for missing items:

EW-7717Un / EW-7718Un

- Wireless USB Adapter x1
- USB Cable with Stand x1
- Quick Installation Guide x1
- CD (EZmax Wizard / Utility, Multi-language Quick Installation Guide & User Manual) x1

EW-7318Ug

- Wireless USB Adapter x1
- USB Cable x1
- Quick Installation Guide x1
- CD (EZmax Wizard / Utility, Multi-language Quick Installation Guide & User Manual) x1

EW-7318USg

- Wireless USB Adapter x1
- USB Cable x1
- 4dBi Antenna x1
- Quick Installation Guide x1
- CD (EZmax Wizard / Utility, Multi-language Quick Installation Guide & User Manual) x1

EW-7108PCg / EW-7708Pn

- Wireless Cardbus Adapter x1
- Quick Installation Guide x1
- CD (EZmax Wizard / Utility, Multi-language Quick Installation Guide & User Manual) x1

EW-7128g

- Wireless PCI Adapter x1
- Antenna with cable x1
- Quick Installation Guide x1
- CD (EZmax Wizard / Utility, Multi-language Quick Installation Guide & User Manual) x1

EW-7727In

- Wireless PCI Adapter x1
- 3dBi Antenna x2
- Quick Installation Guide x1
- CD (EZmax Wizard / Utility, Multi-language Quick Installation Guide & User Manual) x1

EW-7728In

- Wireless PCI Adapter x1
- 3dBi Antennas x3
- Quick Installation Guide x1
- CD (EZmax Wizard / Utility, Multi-language Quick Installation Guide & User Manual) x1

EW-7738Pn

- Wireless ExpressCard x1
- Quick Installation Guide x1
- CD (EZmax Wizard / Utility, Multi-language Quick Installation Guide & User Manual) x1

EW-7748In

- Wireless PCI Express Adapter x1
- 3dBi Antenna x3
- Quick Installation Guide x1
- CD (EZmax Wizard / Utility, Multi-language Quick Installation Guide & User Manual) x1

3. Network Card Installation

Please follow the following instructions to install your new USB wireless network card:

3.1 Hardware Installation

EW-7318Ug / EW-7318USg / EW-7717Un / EW-7718Un

1. Fasten the antennas to the antenna connectors on the network card by clockwise direction. **(EW-7318USg only)**
2. Insert the USB wireless network card into an empty USB 2.0 port of your computer when computer is switched on.

Never use force to insert the card, if you feel it's stuck, flip the card over and try again.

3. The following message will appear on your computer, click 'Cancel'.



EW-7128g / EW-7727In / EW-7728In / EW-7748In

1. SWITCH THE COMPUTER OFF, remove the cover and insert the wireless network card into an empty PCI slot (**EW-7128g/EW-7728In/ EW-7727In**) or PCI Express slot (**EW-7748In**) of your computer.
2. Fasten the antennas to the antenna connectors on the network card by clockwise direction.
3. You can bend the antenna to fit actual needs.
4. Switch the computer on, the following message will appear on your computer, please click 'cancel'.



EW-7108PCg/ EW-7708Pn / EW-7738Pn

1. Please insert the wireless network card into an empty PCMCIA slot (**EW-7108PCg/EW-7708Pn**) or ExpressCard slot (**EW-7738Pn**) of your computer. You can insert the card when the computer is power off or on

Don't use force to insert the card into PCMCIA or ExpressCard slot; if you feel it get stuck, remove it and flip the card upside down, and then try again

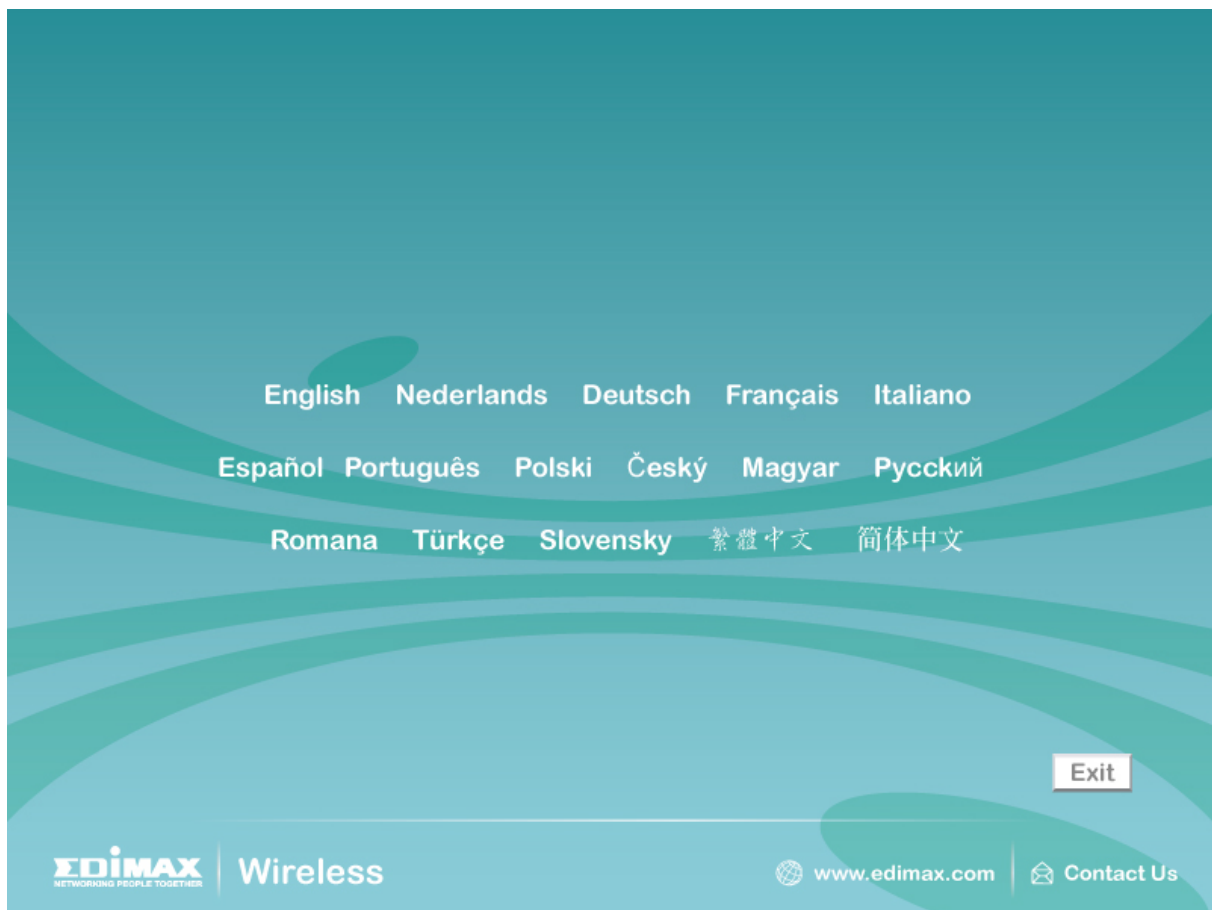
2. The following message will appear on your computer, click 'Cancel'.



3.2 Software Installation

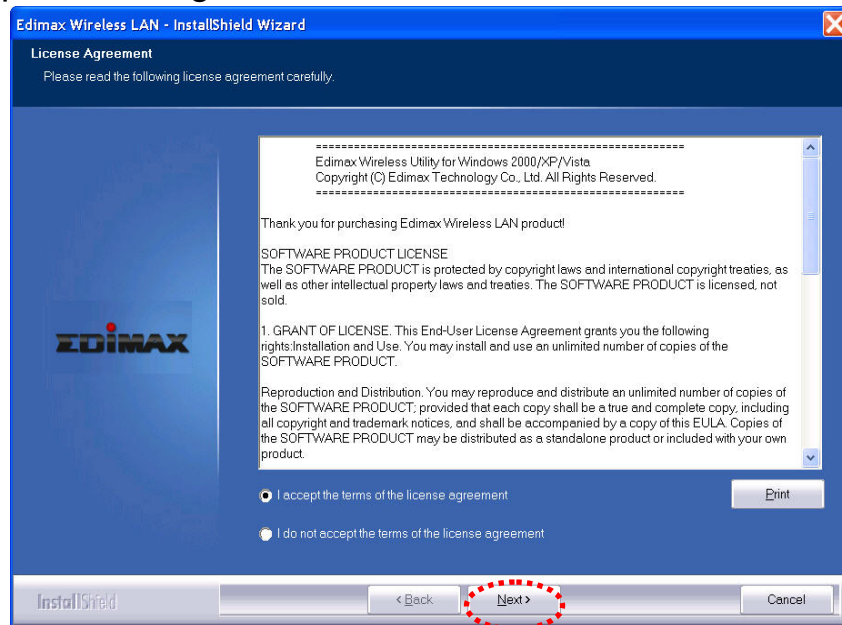
This wizard can be run in Windows 2000/XP/Vista. **The following procedures are operated in Windows XP.**

You can install the Wireless Adapter by EZMAX Setup Wizard in the CD-ROM including in the package. The wizard is an easy and quick configuration tool for internet connection with series process. When you start EZMAX Setup Wizard, you will get the following welcome screen. Please choose the language to start the configuration. The wizard will guide you to finish your network connection. We will not provide any instruction for the EZMAX Setup Wizard here.

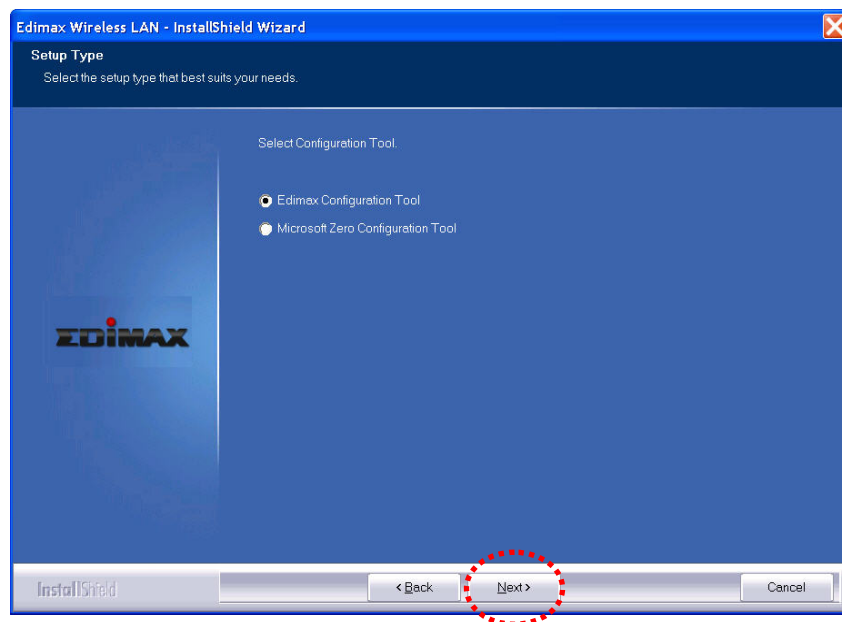


If you lose the CD ROM or you prefer the traditional setup procedure, please follow the instruction as following step in this quick installation guide.

- 3.2.1 Please execute 'Edimax_xxxx_Setup.exe' program to install your wireless adapter. Please read the end user license agreement and click 'I accept the terms of the license agreement' and 'Next' to accept license agreement.

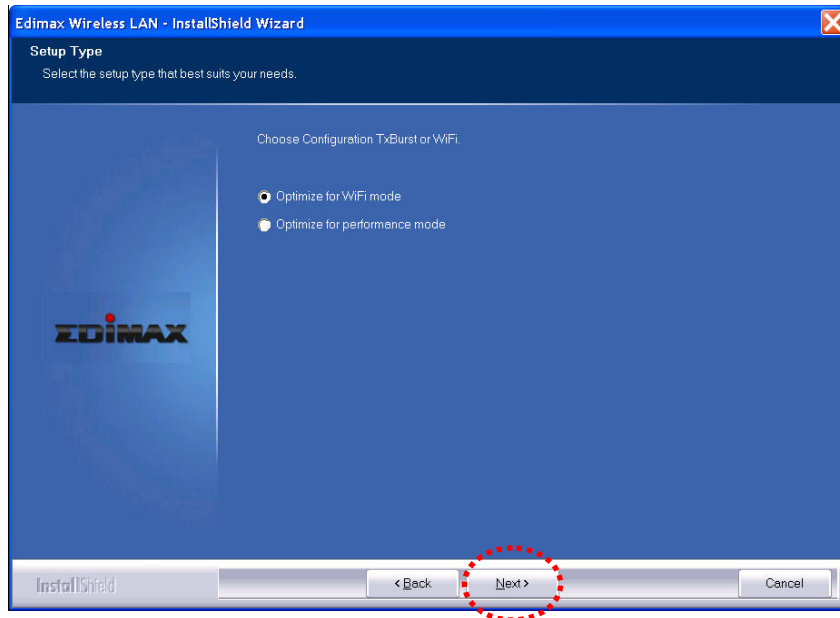


- 3.2.2 You can choose the configuration tool used to configure the wireless network card here. It's recommended to select 'Edimax Configuration Tool', which provides fully access to all function of this wireless network card. If you prefer to use the wireless configuration tool provided by Windows XP or Vista, please select 'Microsoft Zero Configuration Tool', and then click 'Next'.

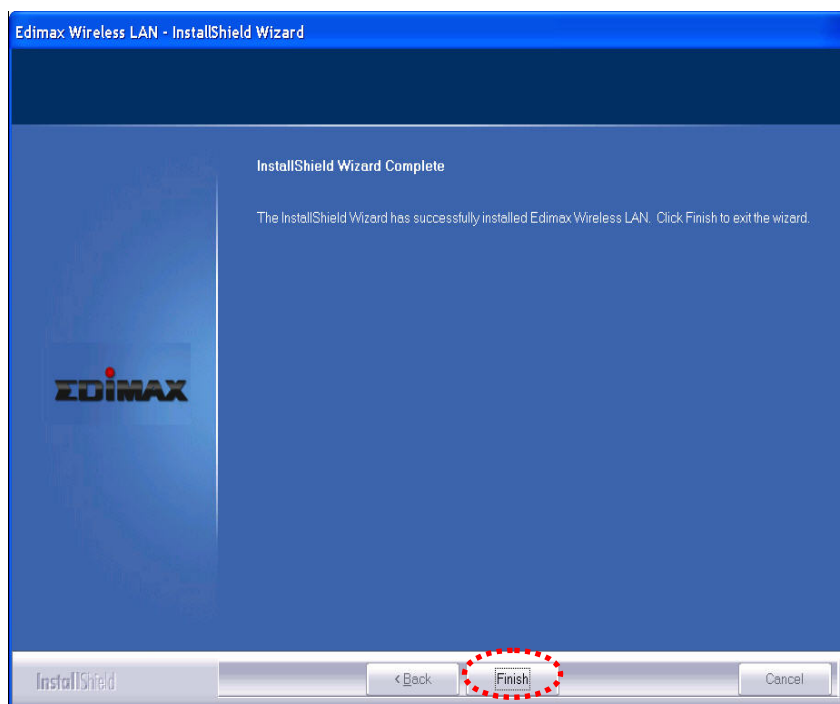


3.2.3 Please select 'Optimize for WiFi mode' for wireless compatibility, then click 'Next'.

If you want to enhance wireless performance, please select 'Optimize for performance mode'. However, wireless compatibility is not guaranteed in this mode. Please refer to user manual for details of performance mode.



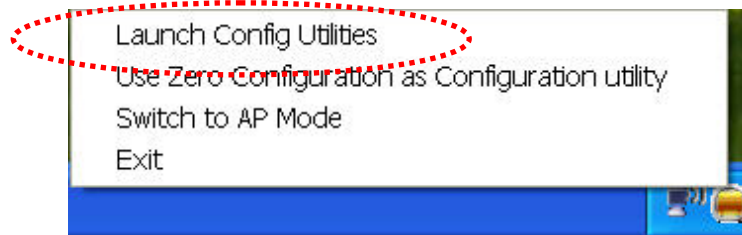
3.2.4 When you see this message, please click 'Finish' to complete the driver installation process.



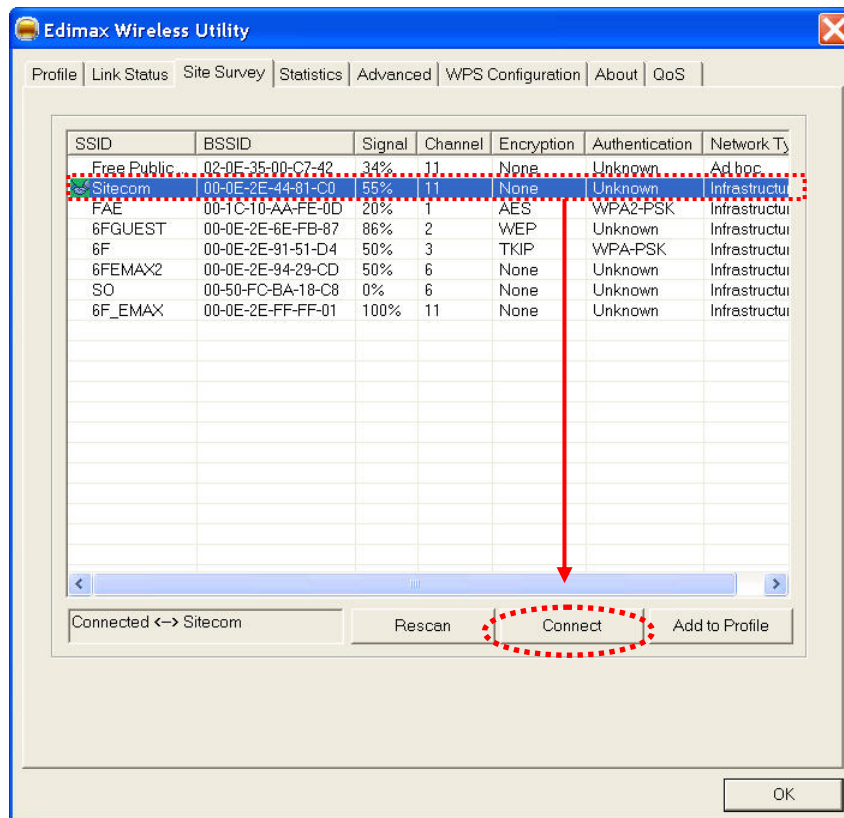
4. Connect to Wireless Access Point

Using Configuration Utility to Connect to Wireless Access Point

- 4.1 After installation is complete, wireless configuration utility will be shown as an icon at the lower-right corner of your windows desktop. Please click the icon by right mouse key, and select 'Launch Config Utilities'



- 4.2 Configuration utility will scan for wireless access points automatically, and all found access points will be displayed. Please select an access point you wish to connect, and click 'Connect'. If the wireless access point you want to connect does not show here, please click 'Rescan'



- 4.3 If the wireless access point uses encryption, you have to input WEP passphrase or WPA preshared key. Please ask the owner of the wireless access point you want to connect, and input the correct passphrase / preshared key here, then click 'OK'. If the value you inputted here is wrong, you will not be able to connect to wireless access point.
- Authentication type is selected automatically, please don't change it.

Authentication and Security

Authentication Type : WPA2-PSK 802.1x Setting

Encryption : AES

WPA Preshared Key :

Wep Key

☒ Key#1 Hex

☐ Key#2 Hex

☐ Key#3 Hex

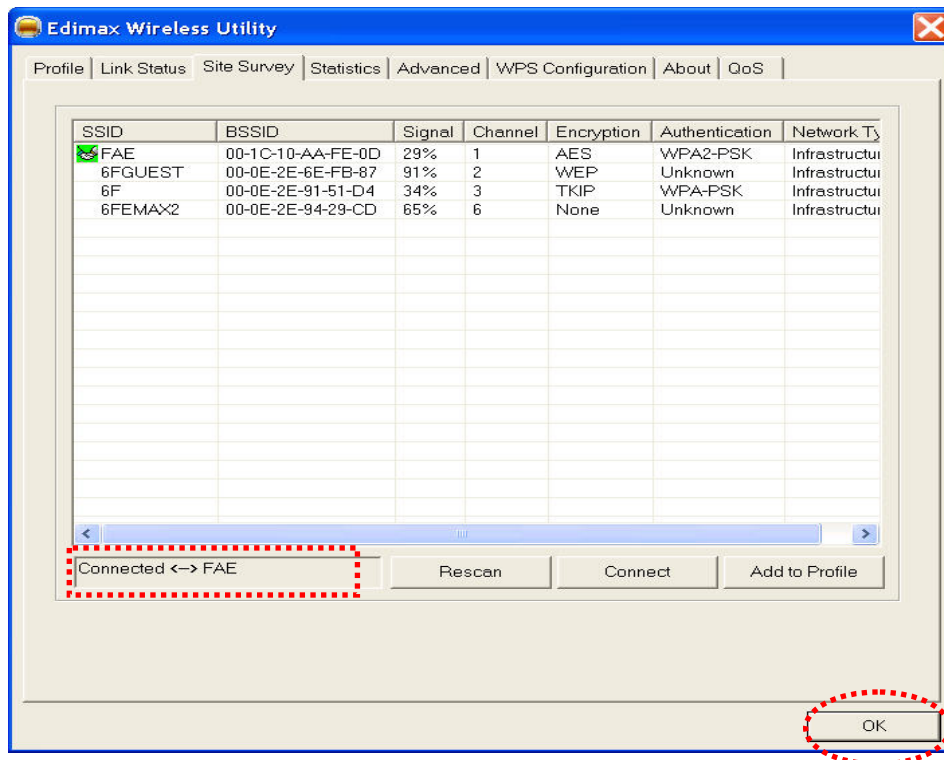
☐ Key#4 Hex

* WEP 64 Bits Encryption: Please Keyin 10 HEX characters or 5 ASCII characters
* WEP 128 Bits Encryption: Please Keyin 26 HEX characters or 13 ASCII characters

☐ Show Password

OK Cancel

- 4.4 If the wireless access point is successfully connected, you'll see a 'Connected' message displayed at the lower-left corner of wireless configuration utility window. Click 'OK' to exit.



For advanced settings and other features of this wireless network card, please refer to user manual enclosed in supplied CD-ROM.

Federal Communication Commission Interference Statement

This equipment has been tested and found to comply with the limits for a Class B digital device, pursuant to Part 15 of FCC Rules. These limits are designed to provide reasonable protection against harmful interference in a residential installation. This equipment generates, uses, and can radiate radio frequency energy and, if not installed and used in accordance with the instructions, may cause harmful interference to radio communications. However, there is no guarantee that interference will not occur in a particular installation. If this equipment does cause harmful interference to radio or television reception, which can be determined by turning the equipment off and on, the user is encouraged to try to correct the interference by one or more of the following measures:

1. Reorient or relocate the receiving antenna.
2. Increase the separation between the equipment and receiver.
3. Connect the equipment into an outlet on a circuit different from that to which the receiver is connected.
4. Consult the dealer or an experienced radio technician for help.

FCC Caution

This device and its antenna must not be co-located or operating in conjunction with any other antenna or transmitter. This device complies with Part 15 of the FCC Rules. Operation is subject to the following two conditions: (1) this device may not cause harmful interference, and (2) this device must accept any interference received, including interference that may cause undesired operation. Any changes or modifications not expressly approved by the party responsible for compliance could void the authority to operate equipment.

Federal Communication Commission (FCC) Radiation Exposure Statement

This equipment complies with FCC radiation exposure set forth for an uncontrolled environment. In order to avoid the possibility of exceeding the FCC radio frequency exposure limits, human proximity to the antenna shall not be less than 20cm (8 inches) during normal operation.

The antenna(s) used for this transmitter must not be co-located or operating in conjunction with any other antenna or transmitter.

R&TTE Compliance Statement

This equipment complies with all the requirements of DIRECTIVE 1999/5/EC OF THE EUROPEAN PARLIAMENT AND THE COUNCIL of March 9, 1999 on radio equipment and telecommunication terminal Equipment and the mutual recognition of their conformity (R&TTE)

The R&TTE Directive repeals and replaces in the directive 98/13/EEC (Telecommunications Terminal Equipment and Satellite Earth Station Equipment) As of April 8, 2000.

Safety

This equipment is designed with the utmost care for the safety of those who install and use it. However, special attention must be paid to the dangers of electric shock and static electricity when working with electrical equipment. All guidelines of this and of the computer manufacture must therefore be allowed at all times to ensure the safe use of the equipment.

EU Countries Intended for Use

The ETSI version of this device is intended for home and office use in Austria, Belgium, Denmark, Finland, France, Germany, Greece, Ireland, Italy, Luxembourg, Bulgaria, Cyprus, Czech Republic, Estonia, Hungary, Latvia, Lithuania, Malta, Poland, Romania, Slovakia, Slovenia, the Netherlands, Portugal, Spain, Sweden, and the United Kingdom.

The ETSI version of this device is also authorized for use in EFTA member states: Iceland, Liechtenstein, Norway, and Switzerland.

EU Countries not intended for use

None

Please check the declaration of conformity on www.edimax.com





EDIMAX Technology Co., Ltd.

www.edimax.com