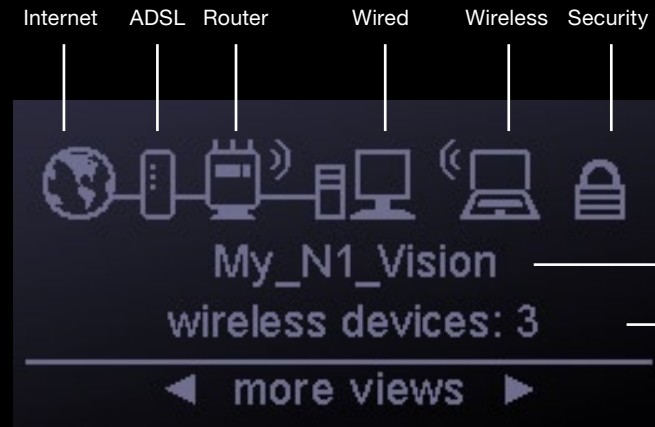


Network Status Display



Your network's name

Number of connected wireless computers/devices

Need help?

See the extended user manual on the CD-rom or go to:

UK

<http://www.belkin.com/uk/support/>

P75617uk

BELKIN®

www.belkin.com

F5D8632uk4A

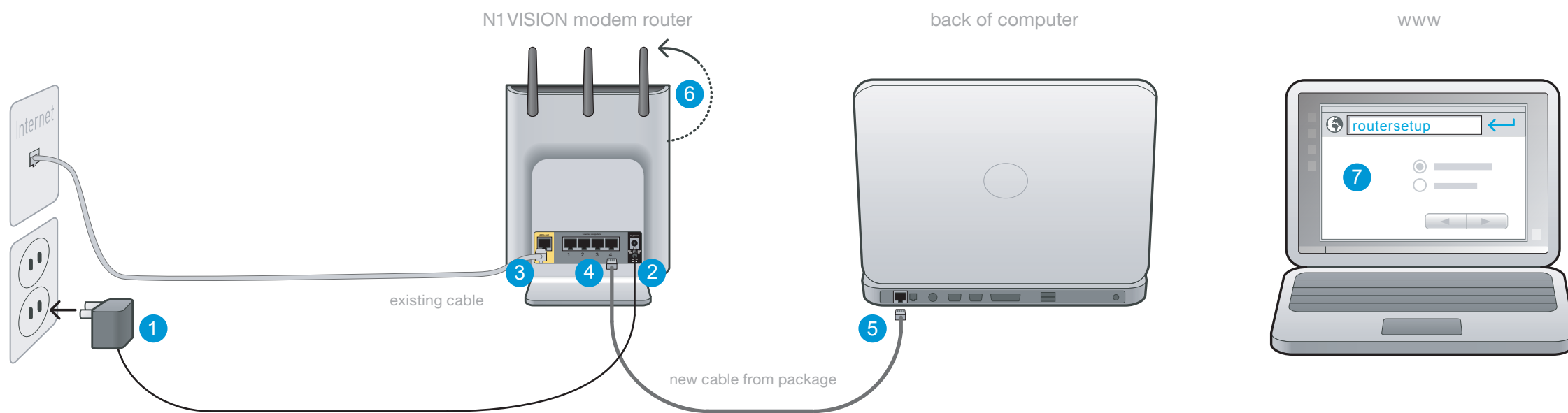
© 2008 Belkin International, Inc. All rights reserved. All trade names are registered trademarks of respective manufacturers listed.

Quick Installation Guide

N1 VISION
WIRELESS MODEM ROUTER



BELKIN®



- ① Plug the power supply into a wall outlet.
- ② Plug the other end into the black port on the Router.
- ③ Locate the cable that connects your old modem to the ADSL wall jack. Unplug it from your old modem and then connect it to port labeled “ADSL port” (Yellow Port) on the back of your N1 Vision Modem Router.
- ④ Connect the new networking RJ45 cable (provided in the box) to any gray port on the back of the router.
- ⑤ Connect the other end of that cable to a networking (Ethernet) port on your computer.
- ⑥ Rotate the antennas up.
- ⑦ Open a web browser on that computer. The Belkin Router Wizard should appear automatically. If it doesn’t, enter “routersetup” into the web-address field and press the “Enter” key.